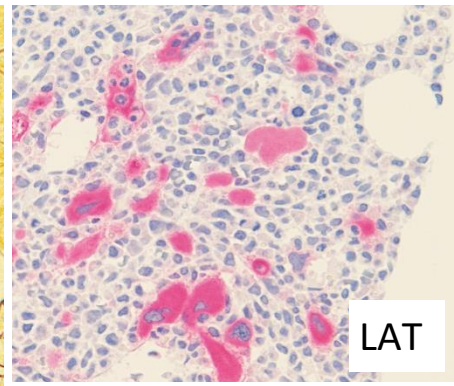
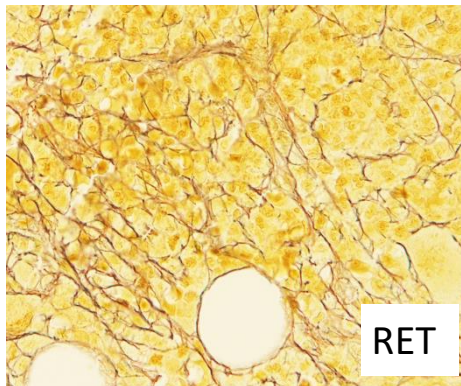
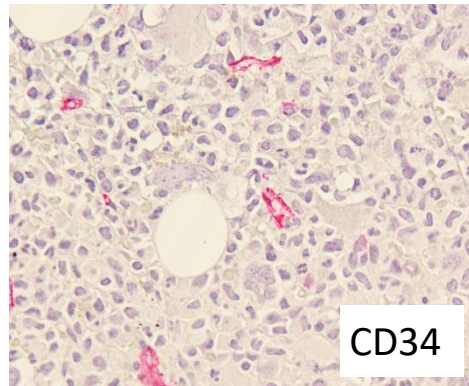
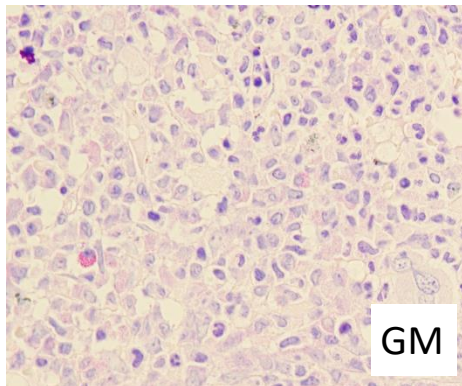


La **DIAGNOSTICA** **EMATOPATOLOGICA** nell'ERA della **MEDICINA** di **PRECISIONE**

Clinical Case

Clara Bertuzzi

Emolinfopatologia, IRCCS Policlinico di Sant'Orsola, Bologna



Male, 48

Hb: 7g/dl, PLT: 50,000.

Peripheral Blasts 5%

LDH: 500,

No SPLENOMEGALY.

NGS NPM1

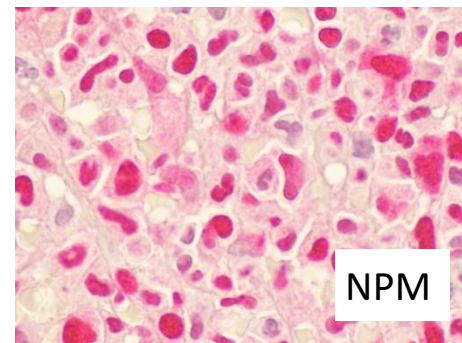
VAF 34%

FLT3-ITD

VAF 5%

FLT3- TKD

VAF 8%



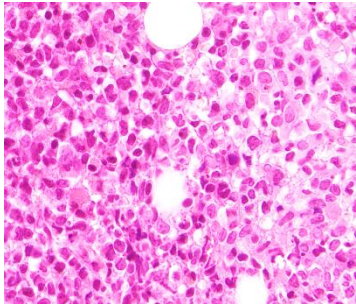
NO MUTAZIONI DRIVER MPN

INDUCTION TP: Cytarabin
Daunorubicin
Midostaurin



Remissione

BOM no disease

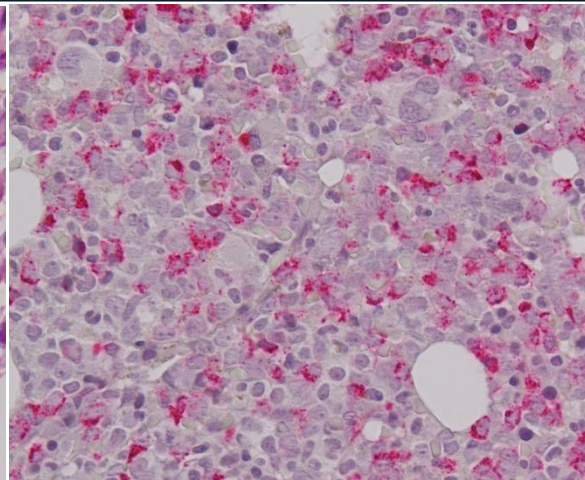
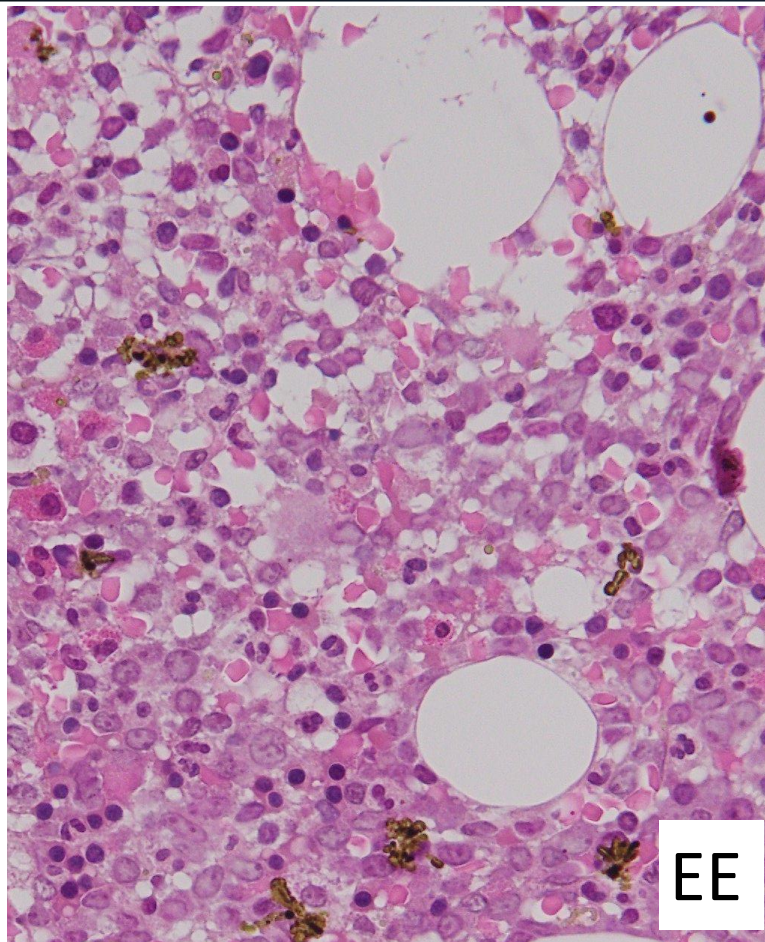


CD34-,
NPMc-,
No
fibrosis

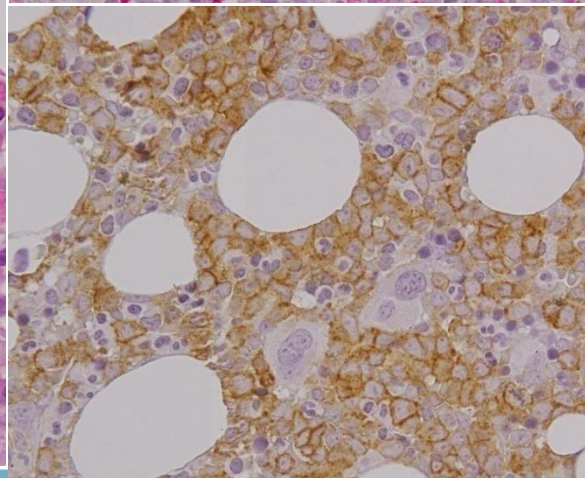
NGS NPM1 NPM1 ratio1.5 (LOG RED2.41)
FLT3-ITD wt
FLT3- TKD wt

biopsy and bone marrow aspiration for reevaluation

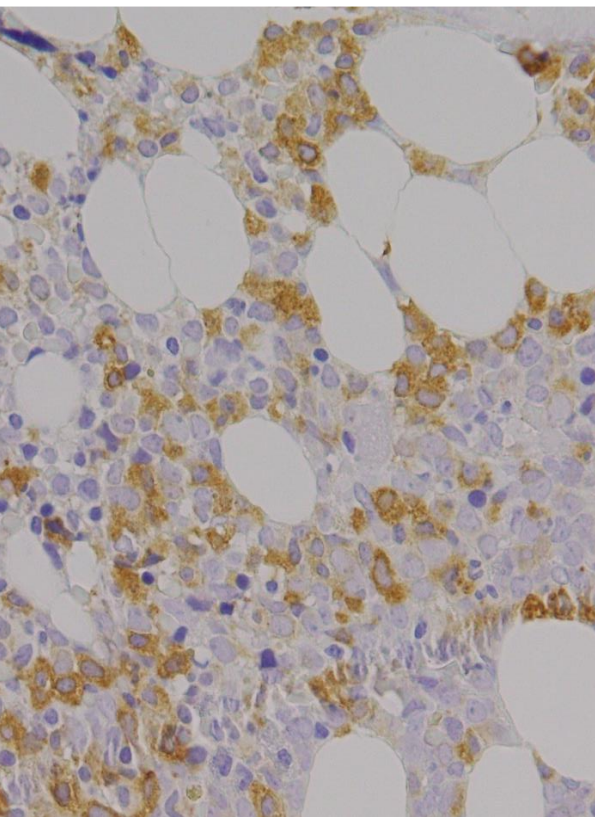
NGS NPM1 96.89
FLT3-ITD MUT
FLT3- TKD WT



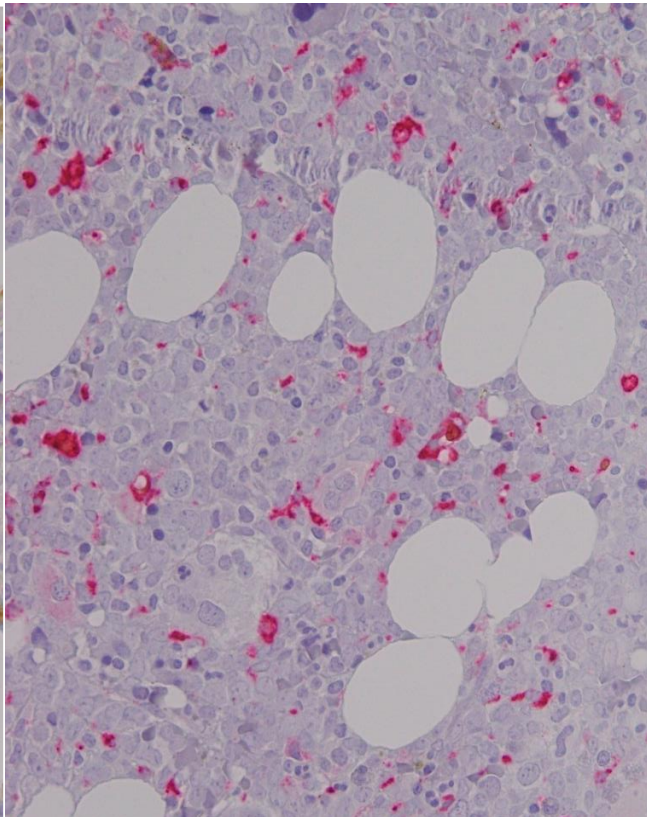
CD34



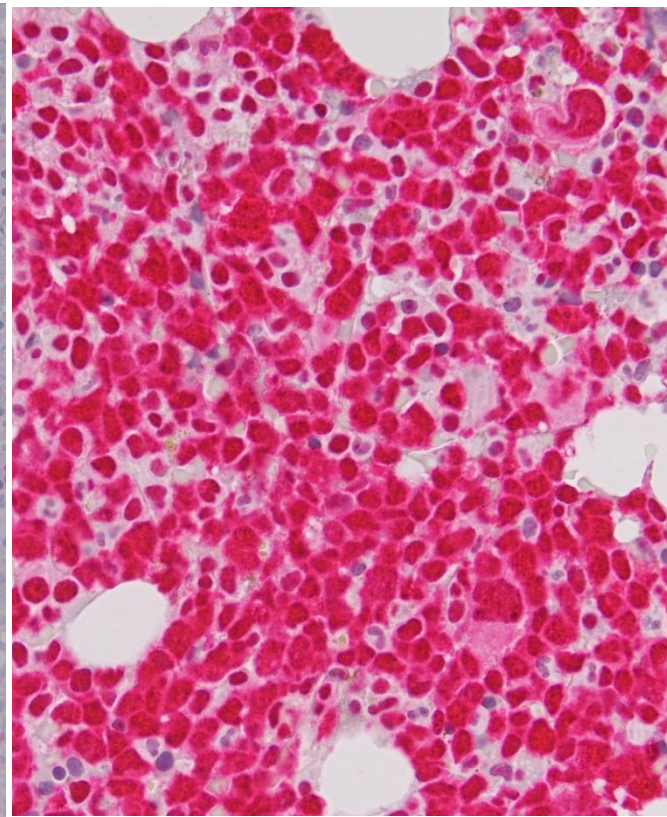
CD117



MPO



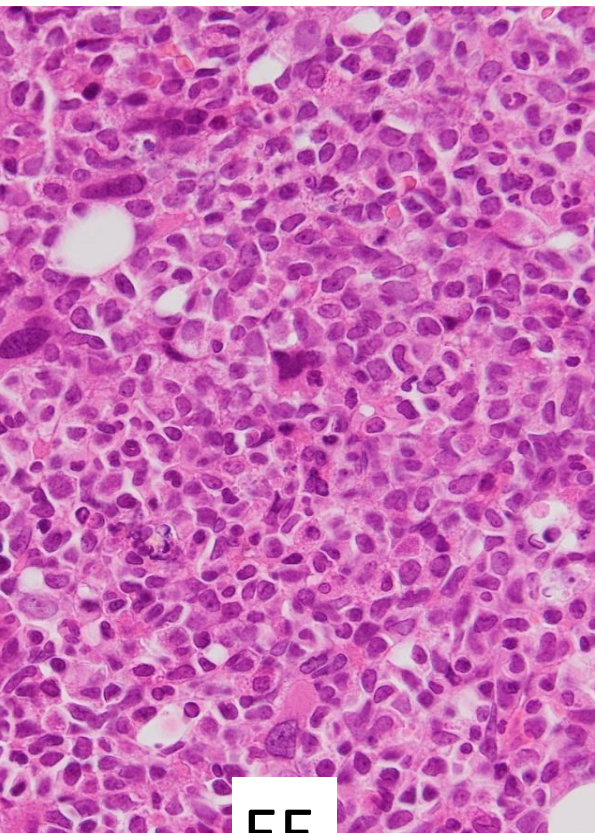
CD68PGM1



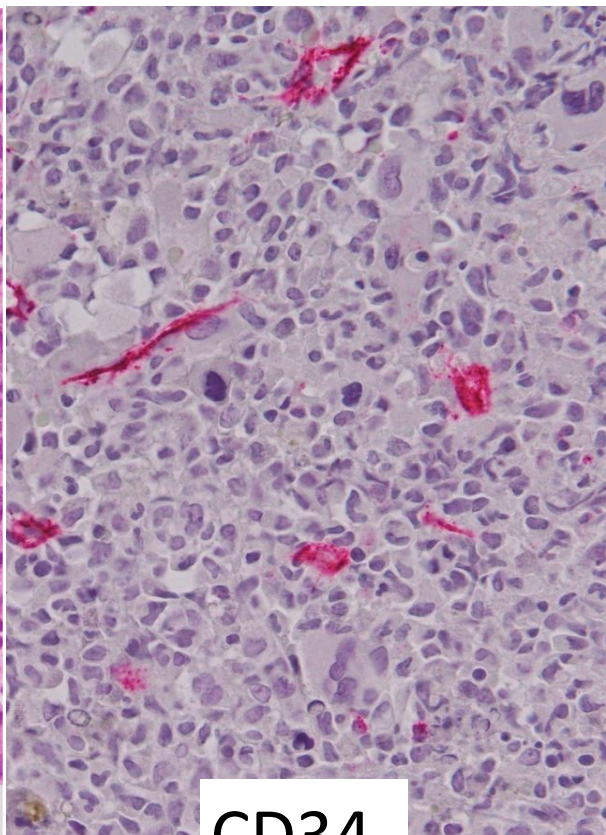
NPM



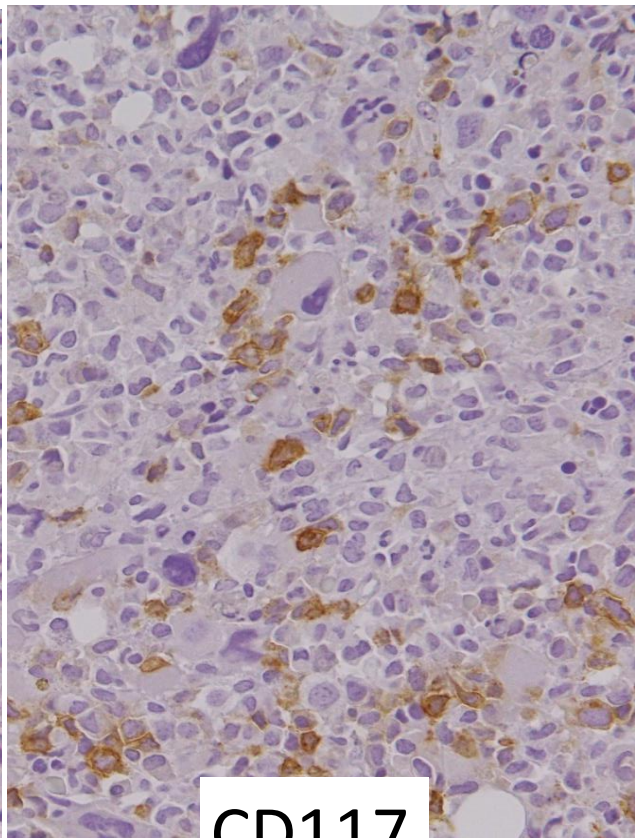
START Gilteritinib



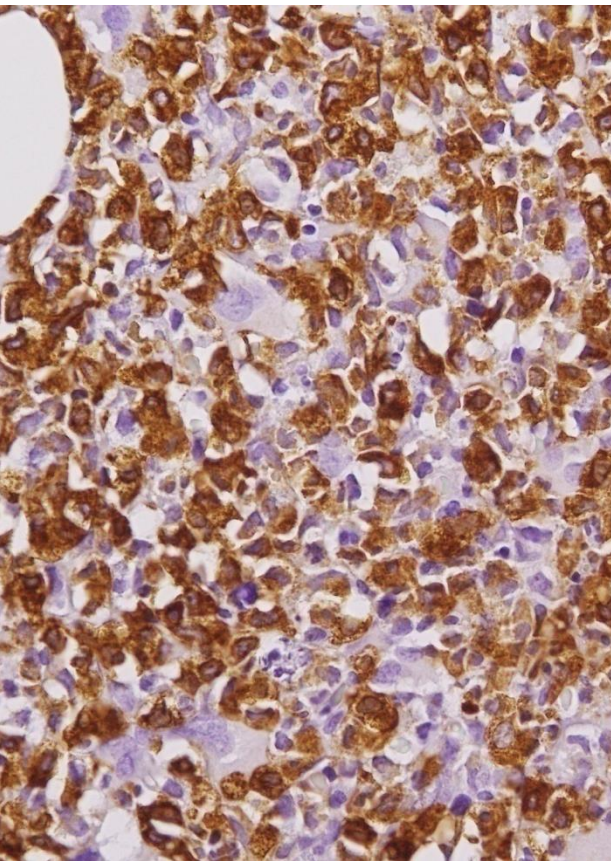
EE



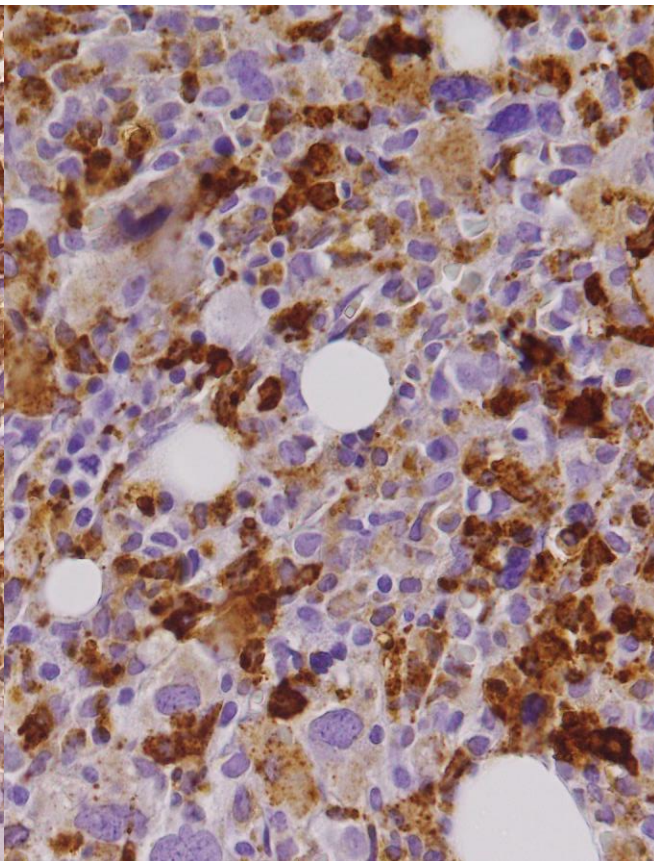
CD34



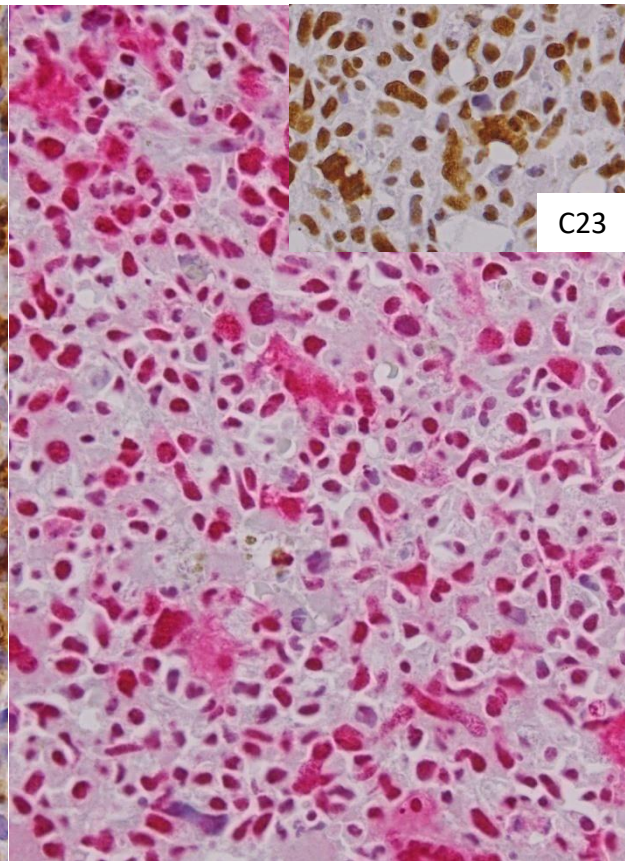
CD117



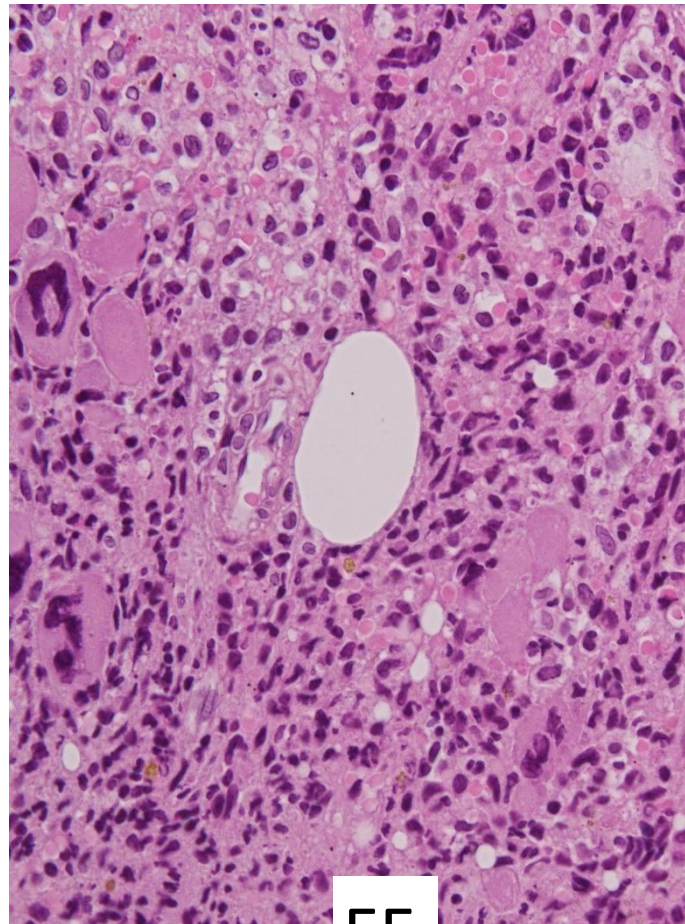
MPO



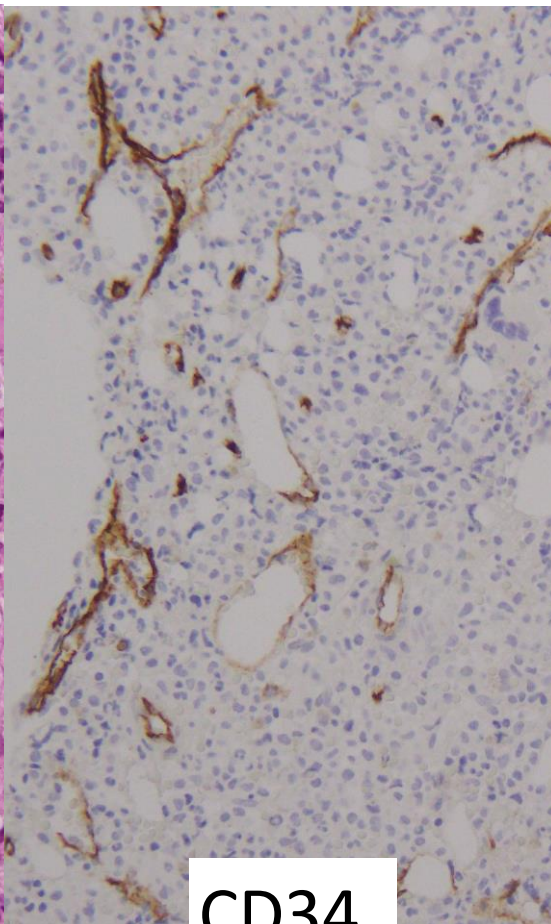
CD68PGM1



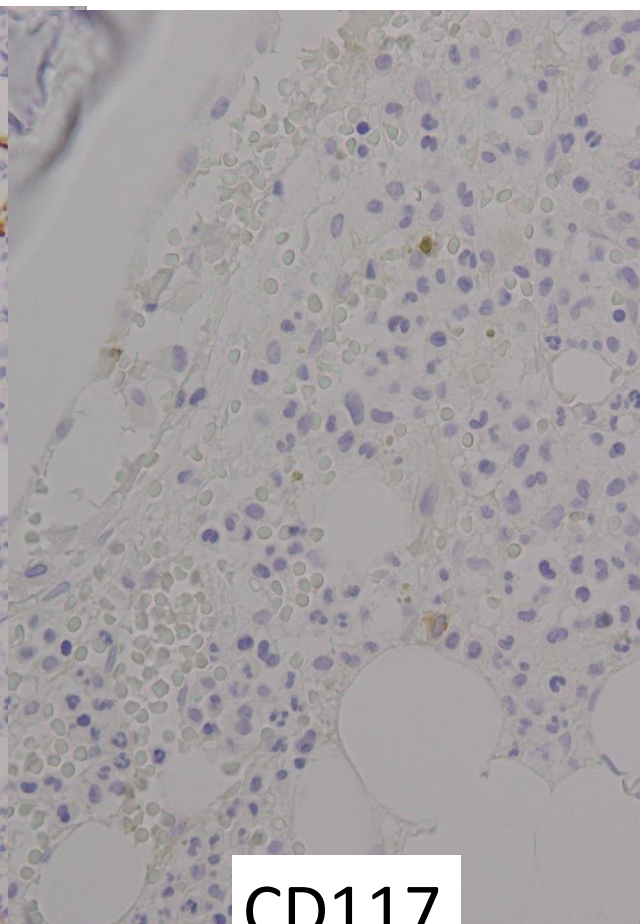
NPM



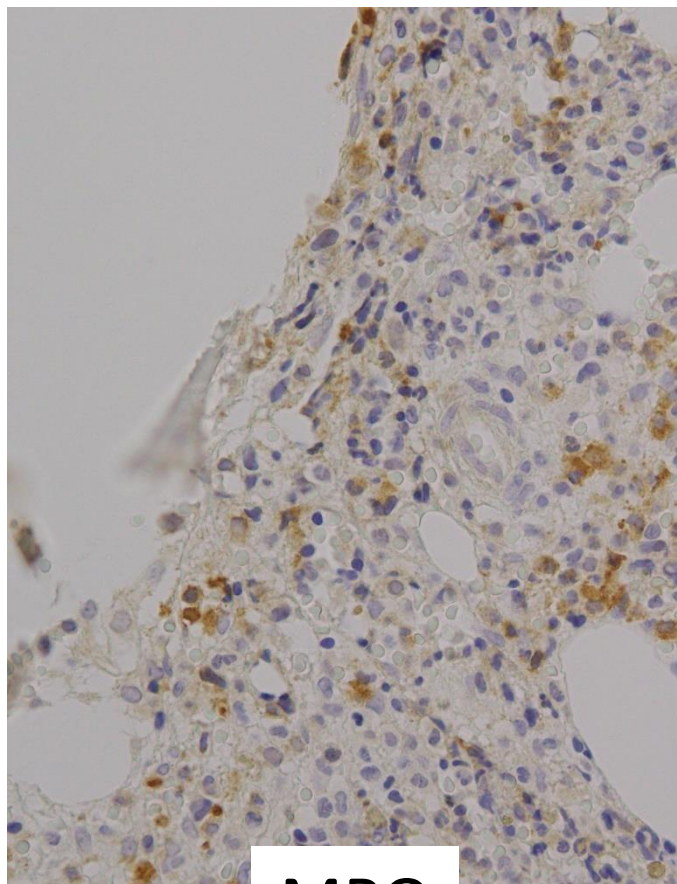
EE



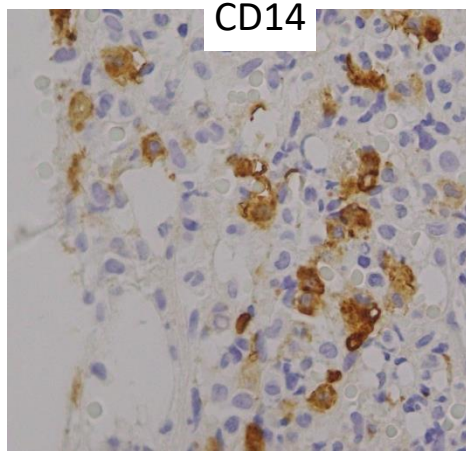
CD34



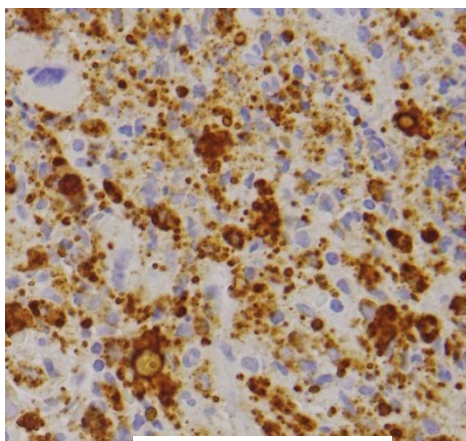
CD117



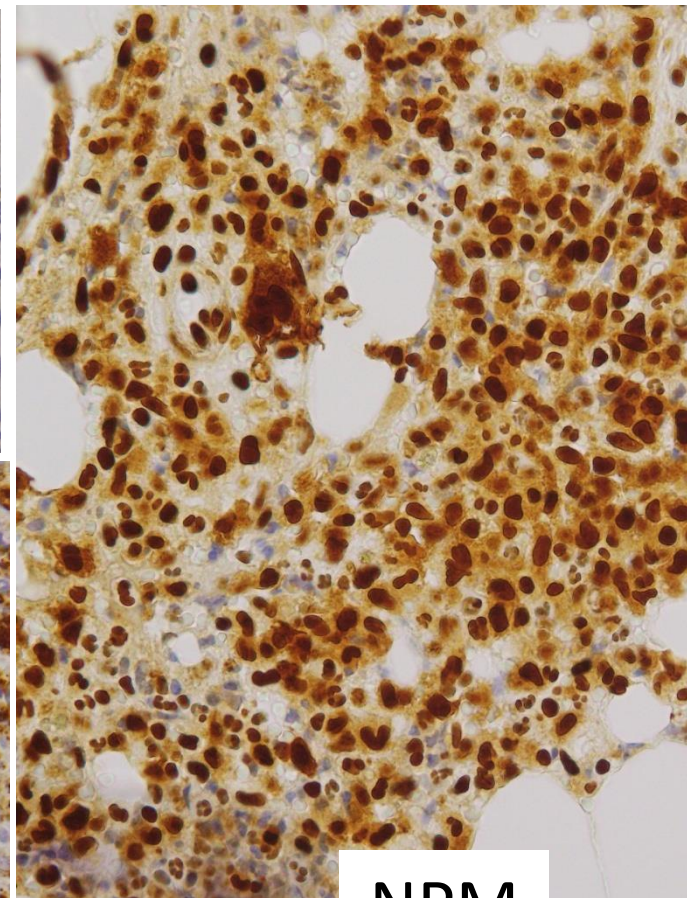
MPO



CD14

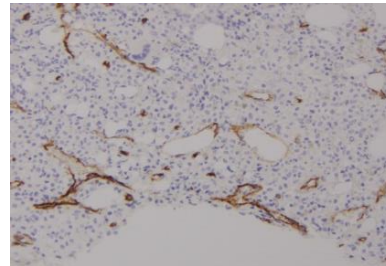
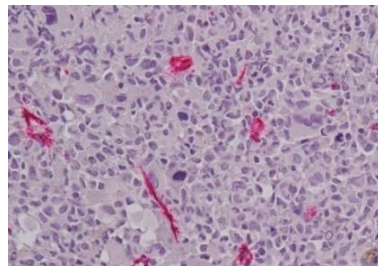
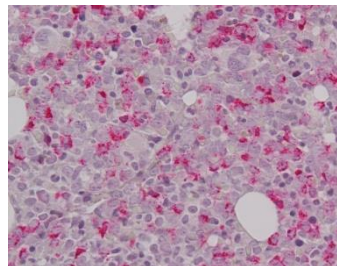


CD68PGM1

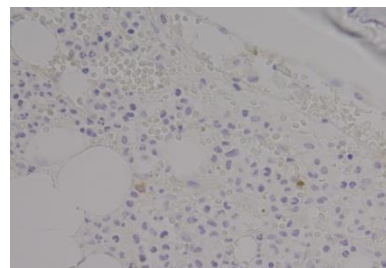
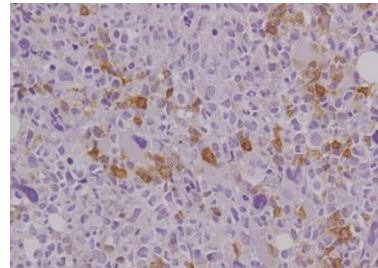
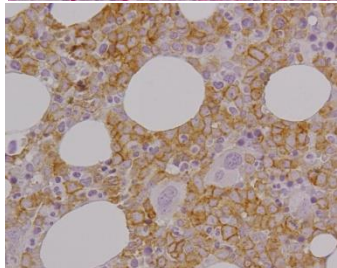


NPM

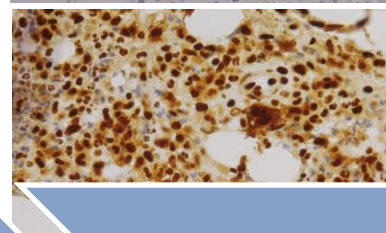
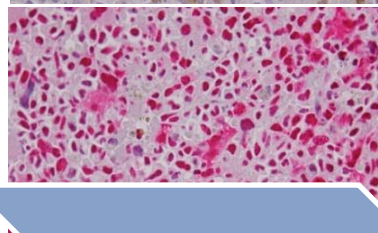
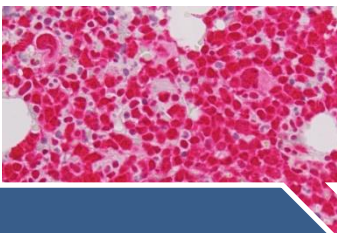
CD34



CD117



NPM



CD34+, CD117+, NPMc+
MPO-

CD34RARE, CD117-+E
NPMc RARE
MPO-+

CD34-, CD117-,
MPO-+, CD14+ NPMc+

- Allelogeneic HSCT, UD HLA 10/10 MAC conditioning
- Jan 26 Alive and well persistent remission.

take-home messages

- Gilteritinib/ differentiating agents induce a phenotypic evolution of the disease
- Biological continuity between acute leukemia -persistent differentiated clonality
- The definition of 'blast' can become inadequate/imprecise under therapeutic pressure
- The ICC and WHO classifications do not address the post-targeted therapy context
- Follow-up must integrate morphology, immunophenotype, and clonal markers (NPM1)



Thank you

Emolinfopatologia, IRCCS Policlinico di Sant'Orsola, Bologna

Elena Sabattini

Claudio Agostinelli

Carlo Alberto Sagramoso Sacchetti

Milena Piccioli

Anna Gazzola

Claudia Mannu

Gian Paolo da Pozzo

Federica Sandri

Debora Muscara

Silvia Pedrini

Thomas Gambarini

Cristina Grassigli

Francesca Conti

Daniela di Dio

Barbara Fattorini

Simona Righi

Maura Rossi

Ematologia, IRCCS Policlinico di Sant'Orsola, Bologna

Jacopo Nanni